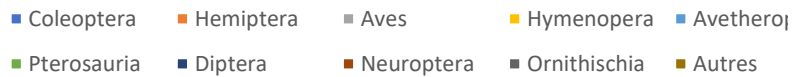
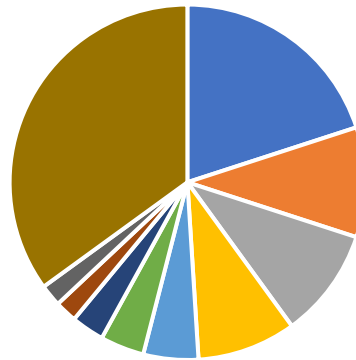


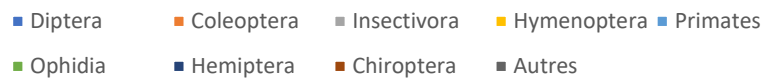
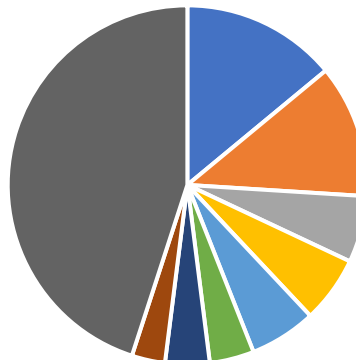
Coleoptera	20%
Hemiptera	10%
Aves	10%
Hymenopera	9%
Avetheropoda	5%
Pterosauria	4%
Diptera	3%
Neuroptera	2%
Ornithischia	2%
Autres	35%
Total	100%

Faune de Jehol-Chine
Crétacé supérieur



Diptera	14%
Coleoptera	12%
Insectivora	6%
Hymenoptera	6%
Primates	6%
Ophidia	4%
Hemiptera	4%
Chiroptera	3%
Autres	45%
Total	100%

Faune de Meudon - France
Cénozoïque Yprésien



poda